

## Atlas Academy Newsletter - February 2024

**Safeguarding Update** - Mrs. Grant has now left our school and our new Designated Safeguarding Lead is **Mrs. Kerry Ann Beet**. Mrs. Beet is really looking forward to working with you all as we continue to ensure that all of our children are safe and happy. Please do not hesitate to contact Mrs. Beet if you need have any questions or need our support.

**MyChildAtSchool** - The MyChildAtSchool app is the best way to access all school information and communication. Please speak to the office if you need any help in setting this up.



**Reception Class 2024-25** - If you have a child currently in Nursery please remember to apply for their place in Reception for September if you haven't yet done so b- <https://fis.doncaster.gov.uk/Synergy/Parents/default.aspx>.

### Parent Meetings in January

**Multiply** - Our Multiply Maths sessions have been fantastic so far and it has been wonderful to see families attending to widen their mathematical understanding and complete activities with their children. As the sessions continue, we will continue Atlas' journey to improve maths skills and enjoyment for everyone!

**Y4 MTC meeting** - Thank you to everyone who attended the Y4 Multiplication Tables Check meeting. Remember that if you have any questions regarding the Multiplication Tables Check, you can speak with your class teacher who can support you. Also, don't forget that every child has a login for the Sumdog app, which allows them to play games related to practising the areas of maths they struggle with. There is also a section on there to practice times tables. Please encourage your children to use the app as often as possible.

**Y6 SATS meeting** - Thank you to all parents who attended the Y6 SATS meeting where we explained the process of the testing that is taking place in May. Since then, many families have already come to us asking for additional help and support for at home which is wonderful to see. If you require any additional resources or have any questions or concerns leading up to the tests please speak with Miss Sutcliffe or Miss Scargill.

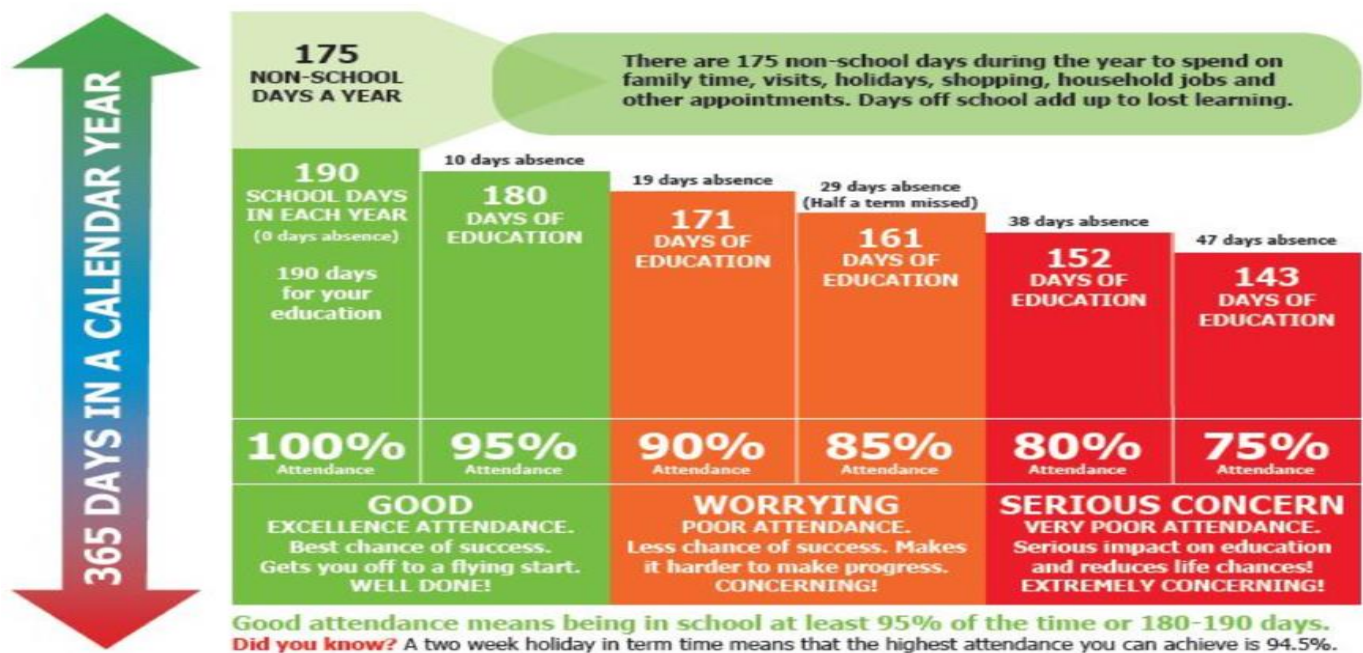
Attendance at Atlas - Coming to school helps our children to have a strong routine in their lives and to get fully involved with their important learning. It helps them to communicate well with others and to build strong, positive relationships with their peers.

**MOMENTS  
MATTER,  
ATTENDANCE  
COUNTS.**

Our overall school attendance is currently **94.3%** with persistent absences **at 21.4%**. This is much improved on last year but we really need your help to improve attendance to at least **95%** and to reduce persistent absence to **below 20%** so that your children get the education they deserve.

Please do not hesitate to speak with our Pastoral Team (Mrs. Beet, Miss Thackeray or Mrs. Nicholson) if you need any further support with your child's attendance.

## Don't miss out on the education you deserve.



### February 2024

Tuesday 6<sup>th</sup> - Year 1 Parents Phonics Meeting, 2:30pm

Wednesday 7<sup>th</sup> - Reception Parents Phonics Meeting, 2:30pm

Monday 12<sup>th</sup> - Monday 19<sup>th</sup> - School CLOSED for all pupils

Tuesday 20<sup>th</sup> - School OPEN for all pupils

W/C Monday 26<sup>th</sup> - Parents Evenings

### March 2024

W/C Monday 4<sup>th</sup> - Book Week, including World Book Day (Thursday 7<sup>th</sup>)

Tuesday 12<sup>th</sup> - Science Fair

Monday 25<sup>th</sup> - Easter Egg entries into school

Friday 29<sup>th</sup> - Friday 12<sup>th</sup> April - School closed to all pupils. We re-open on Monday 15<sup>th</sup> April.